



Friday 12<sup>th</sup> January 2024

# Hesketh-with-Becconsall's NEWS OF THE WEEK

*What you are is God's gift to you,  
what you become is your gift to God.*

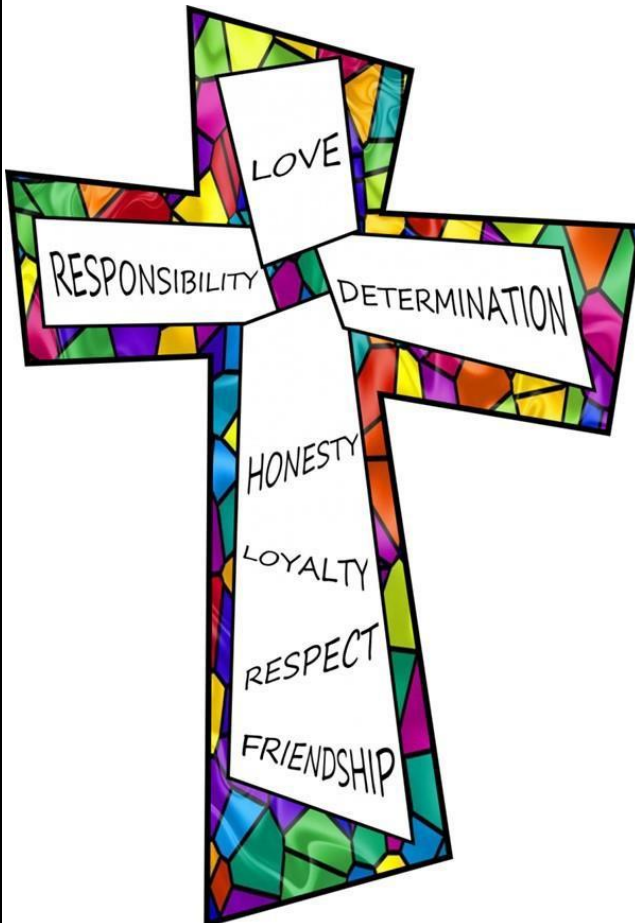
## Happy New Year!

We have enjoyed a lovely return to school with so many positives to celebrate as a school family this afternoon.



## Stars of the Week

for showing our School Value of  
**LOVE**



**Reception**

Jorgie Keijzer

**Year 1**

Jessica Baybutt

**Year 2**

Harry Slinger

**Year 3**

Chloe Leadbetter

**Year 4**

Jude Charnock

**Year 5**

Neve Evans

**Year 6**

Oscar Miller

## House Point Totals this week!



**Becconsall**  
272



**Douglas**  
182



**Hesketh**  
202

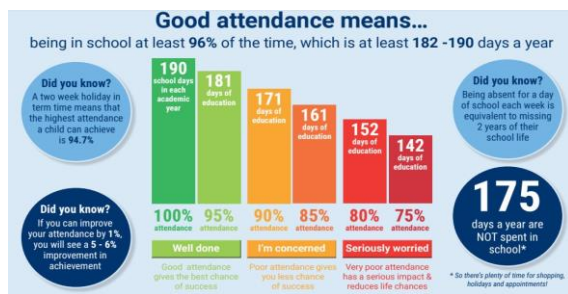


**Ribble**  
257



Please look out for what's going on...

@AllSaintsHwb <https://www.facebook.com/allsaintshwb>



## Attendance Counts!

Whole School Attendance this week: **95.4%**

The class with the best attendance this week is: **Reception 98.9%**

## Dates for your Diary

**Wednesday 17<sup>th</sup> January** 5pm FOS Meeting in the school hall, all welcome.

Please attend and find out how can you help support our school!

**Week Beginning 5<sup>th</sup> February** Children's Mental Health Week including

Tuesday 6<sup>th</sup> February: Safer Internet Day 2024 and Friday 9<sup>th</sup> February: Wear Your Scarf to School Day.

**Friday 9<sup>th</sup> February** 3.25pm School closes for the February half-term holiday

**Monday 19<sup>th</sup> February** School re-opens for the second half of the spring term

**Wednesday 21<sup>st</sup> to Friday 23<sup>rd</sup> February** Year 6 Residential to Min-y-Don

Christian Adventure Centre

**Week Beginning 18<sup>th</sup> March** Parents' Evenings, information to follow

**Thursday 28<sup>th</sup> March** 2pm School closes for the Easter Holidays



## Headteacher Mini Mentions

*Congratulations to the following children:*



**Year 1:** Peggy & Eden for excellent oral vocabulary during our science lesson about seasonal changes, using terminology such as 'hibernate, migrate, evergreen and crisp' when describing how living things and the weather changes across the seasons.

**Year 2:** Harrison & Elyssia for settling back in well and modelling school expectations.

Max & Jayden for being mini teachers in Maths supporting others with subtraction.

**Year 3:** Everyone for trying really hard to use prepositions in their sentences and Daisy for her hard work in mathematics this week.

**Year 4:** Layla for showing love and kindness to her peers. Jack for showing great teamwork in his sports this week alongside being supportive and caring in class.

**Year 5:** Oscar for supporting and helping his peers and working hard to improve his own work.

Logan for an improved attitude to learning, well done.

**Year 6:** Max & Reggie for returning to school with a mature and positive approach towards their learning. Mrs Wilkinson's & Mr Maguire's Maths Groups for an excellent work ethic!

**Min-y-Don**  
CHRISTIAN ADVENTURE CENTRE

## Reminders for Year 6 Children attending the Min-y-Don Residential

- Please return the Form 3B, the Min-y-Don Parental Consent Form and the Behaviour Contract by **Friday 26th January 2024**
- £200 balance to be paid by **Friday 9th February 2024**
- Pocket Money (maximum £10) in a named wallet/envelope by **Friday 9th February 2024**
- Medical Permission Letter & Medicines (if required) on **Monday 19th February 2024**



## All Saints Church Services

*To Love God and to Love One Another'*

### Sunday 14<sup>th</sup> January

9:00 am Holy Communion in The Lady Chapel

10:30am Holy Communion

12:30pm Private Prayer (Church open until 1:30pm)

### Tuesday 16<sup>th</sup> January

7:00pm The MU New Year Meal at The Rufford Arms

### Sunday 21<sup>st</sup> January

9:00 am Holy Communion in The Lady Chapel

10:30am All Age Worship (No Communion)

12:30pm Private Prayer (Church open until 1:30pm)

### Sunday 28<sup>th</sup> January

9:00 am Holy Communion in The Lady Chapel

10:30am Morning Worship (No Communion)

12:30pm Holy Communion in The Lady Chapel

### Sunday 4<sup>th</sup> February

9:00 am Holy Communion in The Lady Chapel

10:30am Holy Communion

12:30pm Private Prayer (Church open until 1:30pm)

Last day for Applications to Primary Schools is this **MONDAY**



**SCHOOL ADMISSIONS PRIMARY SOUTH**

**Do you have a child starting primary school in September 2024 and living in Lancashire?**

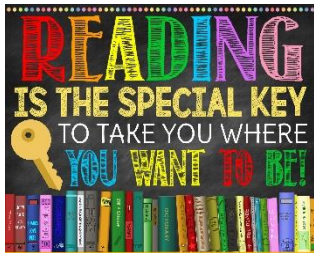
Apply now and check your eligibility for school transport at:  
[www.lancashire.gov.uk/schools](http://www.lancashire.gov.uk/schools)  
or call 01772 532109

**Closing date: 15 January 2024**

You must apply even if a brother or sister is already at the school, or the school is linked to your child's nursery.

**HAVE YOUR SAY** Between 1 October and 31 January schools are consulting with you to make sure admission arrangements meet future needs. To find out more please visit [www.lancashire.gov.uk/schoolplaces](http://www.lancashire.gov.uk/schoolplaces) and click 'school admission policies'.

[lancashire.gov.uk](http://lancashire.gov.uk) >>>> **Lancashire County Council**



## Reading Rewards



Congratulations to all our wonderful readers, reading is the key to learning!

**100 Club** Year 1: Zion & Peggy Year 2: Thomas

Year 3: Alanna & Phoebe Year 4: Jack

**200 Club** Year 1: Amelia-Grace **300 Club** Year 6: Niamh



## Battery Recycling

Please don't forget that at school we help the environment by collecting old batteries for recycling.

Please put old batteries in the **red** lidded container in the entrance foyer, many thanks in advance of your support.



Unfortunately, we have headlice in school so please can you check your child's head this weekend.

## FOUR STEPS TO LICE-FREE LIFE:



### 1: INSPECT

If you suspect head lice, check



### 2: TREAT

Use lice treatment product as directed.



### 3: REMOVE

lice/nits by combing the hair with the comb provided.



### 4: CLEAN

home and personal items.



"What you are is God's gift  
to you, what you become  
is your gift to God"



# Term Dates for the Academic Year 2024-2025

## AUTUMN TERM 2024

**INSET Day 1:** Monday 2<sup>nd</sup> September

1st Half Term: Tuesday 3<sup>rd</sup> September to Friday 18<sup>th</sup> October (3.25pm Finish)

Half-Term Holiday: Monday 21<sup>st</sup> October to Friday 25<sup>th</sup> October

2nd Half Term: Monday 28<sup>th</sup> October to Friday 20<sup>th</sup> December (3.25pm Finish)

Christmas Holiday: Monday 23<sup>rd</sup> December 2024 to Friday 3<sup>rd</sup> January 2025

**74 days**

## SPRING TERM 2025

**INSET Day 2:** Monday 6<sup>th</sup> January

1st Half Term: Tuesday 7<sup>th</sup> January to Friday 14<sup>th</sup> February (3.25pm Finish)

Half-Term Holiday: Monday 17<sup>th</sup> February to Friday 21<sup>st</sup> February

2nd Half Term: Monday 24<sup>th</sup> February to Friday 4<sup>th</sup> April (3.25pm Finish)

Easter Holiday: Monday 7<sup>th</sup> April to Monday 21<sup>st</sup> April 2025

**59 days**

## SUMMER TERM 2025

**INSET Day 3:** Tuesday 22<sup>nd</sup> April

1st Half Term: Wednesday 23<sup>rd</sup> April to Friday 23<sup>rd</sup> May (3.25pm Finish)

Bank Holiday: Monday 5<sup>th</sup> May

Half-Term Holiday: Monday 26<sup>th</sup> May to Friday 30<sup>th</sup> May 2025

2nd Half Term: Monday 2<sup>nd</sup> June to Friday 18<sup>th</sup> July (3.25pm Finish)

**INSET Days 4 and 5:** Monday 21<sup>st</sup> and Tuesday 22<sup>nd</sup> July

**57 days**

**Total = 190 days**

**Total + 5 INSET Days = 195 days**